

REGIONAL DISTRICT OF CENTRAL OKANAGAN

BYLAW NO. 940

---

A Bylaw to Amend the Subdivision and Development Servicing Bylaw No. 704, 1996.

---

WHEREAS the Regional Board of the Regional District of Central Okanagan deems it necessary to amend the Regional District of Central Okanagan Subdivision and Development Servicing Bylaw No. 704, 1996, as amended by Bylaw Nos. 810, 898, and 930 under the provisions of the Local Government Act;

AND WHEREAS the Regional Board deems it advisable to amend the said bylaw;

NOW THEREFORE THE REGIONAL BOARD OF THE REGIONAL DISTRICT OF CENTRAL OKANAGAN IN OPEN MEETING ASSEMBLED ENACTS AS FOLLOWS:

1(a). SECTION 3 – GENERAL REQUIREMENTS  
3.11 Servicing Requirements at Building Permit

To delete in section 3.11, first paragraph subsection (b):

“(b) on the *parcel* itself,”

and replace with:

“(b) for any C5 Motel/Hotel, C7 Motel/Hotel, RMP, and all R3 zoned parcels, on the *parcel* itself,”

1(b). SECTION 4 – ADMINISTRATION AND ENFORCEMENT  
4.02 Administration Fee

To delete in section 4.02, second notation under the Administration Fee Table:

“\*\* 1.8% of the total value of onsite servicing as approved by the *Building Inspector* plus 3.0% of the total capital costs of designing, constructing and installing all offsite *work* as estimated by the *Owner’s Engineer* and as approved by the *Regional District Engineer*.”

And replace with:

“\*\* 1.8% of the total value of onsite servicing required by this bylaw and as approved by the *Building Inspector* plus 3.0% of the total capital costs of designing, constructing and installing all offsite *work* as estimated by the *Owner’s Engineer* and as approved by the *Regional District Engineer*.”

1(c). SCHEDULE "C.4" – CURBS, GUTTERS, AND SIDEWALKS  
SECTION 1 – GENERAL REQUIREMENTS  
1.03 Curb, Gutter and Sidewalk Requirements


To delete Table C.4.1. Curb, Gutter, and Sidewalk Requirements in its entirety and replace with APPENDIX "A" attached.

1(d). SCHEDULE "D.2" – STANDARD DRAWINGS

To amend SCHEDULE "D.2" by deleting drawing number 003, Water Main and Sewer Main Anchors, in Division General, in its entirety and replacing it with APPENDIX "B" attached.

2. This bylaw may be cited as the "Regional District of Central Okanagan Subdivision and Development Servicing Amendment Bylaw No. 940, 2001".

READ A FIRST TIME THIS	1 <sup>st</sup>	DAY OF	October,	2001.
READ A SECOND TIME THIS	1 <sup>st</sup>	DAY OF	October,	2001.
READ A THIRD TIME THIS	1 <sup>st</sup>	DAY OF	October,	2001.
RECONSIDERED AND ADOPTED THIS	15 <sup>th</sup>	DAY OF	October,	2001.

  
\_\_\_\_\_  
CHAIRPERSON

  
\_\_\_\_\_  
DIRECTOR OF CORPORATE SERVICES

I hereby certify the foregoing to be a true and correct copy of Bylaw No. 940 cited as the "Regional District of Central Okanagan Subdivision and Development Servicing Amendment Bylaw No. 940, 2001", as read a third time by the Regional Board on the 1st day of October, 2001.

Dated at Kelowna, BC this  
2<sup>nd</sup> day of October, 2001.

  
\_\_\_\_\_  
DIRECTOR OF CORPORATE SERVICES

I hereby certify the foregoing to be a true and correct copy of Bylaw No. 940 cited as the "Regional District of Central Okanagan Subdivision and Development Servicing Amendment Bylaw No. 940, 2001", as adopted by the Regional Board on the 15th day of October, 2001.

Dated at Kelowna, BC this  
16th day of October,  
2001.

  
\_\_\_\_\_  
DIRECTOR OF CORPORATE SERVICES

## APPENDIX "A"

### 1.03 Curb, Gutter and Sidewalk Requirements

The type and width of the curb, gutter and sidewalk shall be provided as specified in Table C.4.1.

**TABLE C.4.1  
CURB, GUTTER AND SIDEWALK REQUIREMENTS**

<b>HIGHWAY CLASSIFICATION</b>	<b>CURB TYPE REQUIRED</b>	<b>MINIMUM SIDEWALK WIDTHS</b>
<i>Commercial Zones</i>		
<i>All Highways</i>	Type 1	1.8 m
<i>All Other Zones</i>		
<i>Arterial</i>	Type 1	1.8 m
<i>Collector</i>	Type 2	1.8 m
<i>Local</i>	Type 2	1.5 m

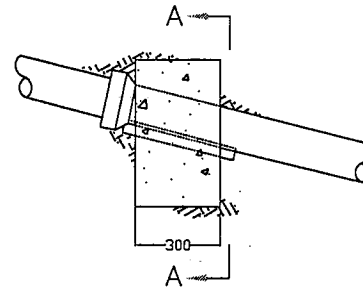
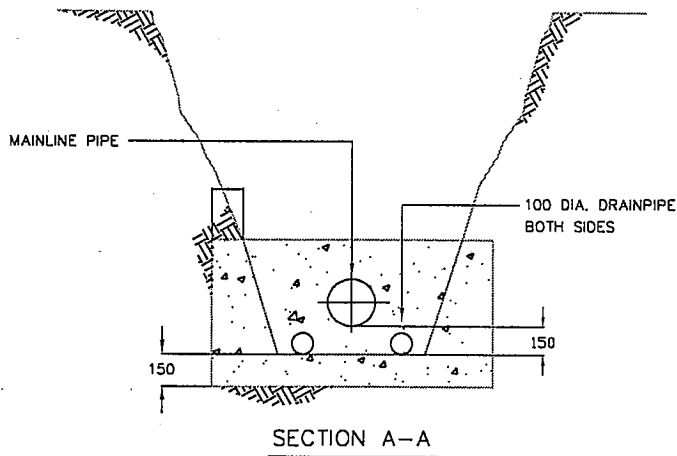
# APPENDIX "B"



REGIONAL DISTRICT  
OF CENTRAL OKANAGAN

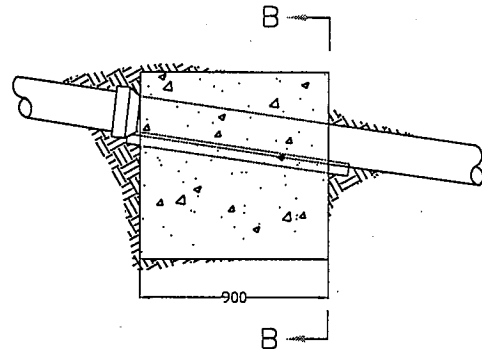
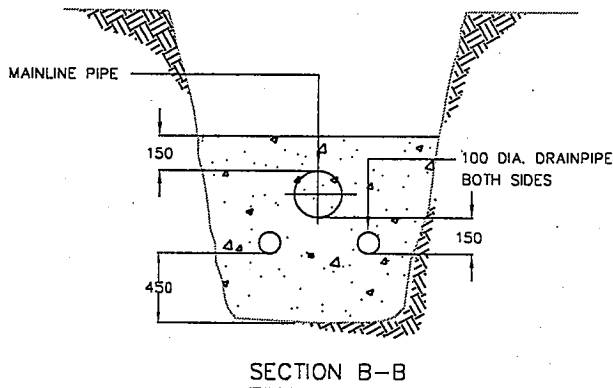
## STANDARD DRAWINGS

NOT TO SCALE



### ALTERNATIVE A

FOR USE IN TILLS AND OTHER STABLE,  
WELL COMPACTED NATIVE MATERIALS.



### ALTERNATIVE B

FOR USE IN CLEAN GRAVELS, SANDS AND  
OTHER LOOSE, PERMEABLE NATIVE MATERIALS.

MAXIMUM SPACING OF ANCHOR BLOCKS (SEE NOTE 5)			
SANITARY AND STORM GRAVITY SEWERS		WATERMANS AND FORCEMANS	
SLOPE	MAX. SPACING	SLOPE	MAX. SPACING
15%-20%	25m	10% OR GREATER	10M
20%-35%	20m		
35%-50%	15m		
50%-OVER	10m		

#### NOTE:

- 1) REFER TO DESIGN DRAWINGS, MMCD 03300 AND SCHEDULE C OF THIS BYLAW FOR DETAILED SPECIFICATIONS.
- 2) USE 20MP<sub>a</sub> CONCRETE UNLESS SPECIFIED OTHERWISE IN DESING DRAWINGS.
- 3) ANCHORS ARE TO BE PLACED AGAINST AND ON THE DOWNHILL SIDE OF THE BELL OF THE PIPE, BUT MUST NOT SURROUND IT.
- 4) DOWNHILL FACE OF ANCHORS TO BE BEARING ON UNDISTURBED SOIL.
- 5) REFER TO CONTRACT DRAWINGS FOR SPECIFIED SPACING IF OTHER THAN MAXIMUM SHOWN IN TABLE.
- 6) THIS DRAWING REPLACES MMCD G8

**WATER MAIN AND SEWER MAIN ANCHORS**

DIVISION:

**GENERAL**

DRAWING NUMBER:

**003**

REVISED: July 2001