



***Westside Landfill
Closure Plan Update***

***Regional District of Central Okanagan
Governance and Services Committee
July 9, 2009***



Site Background

Background Information

- Landfill site in operation since the 1960's.
- Site evolved from a landfill operation to a "convenience centre" that also provided waste diversion programs for businesses and residents in the region.

recyclables (e.g. paper, cans, glass plastic)

drywall

yard waste and brush

tires

metals, white goods and propane tanks

clean fill

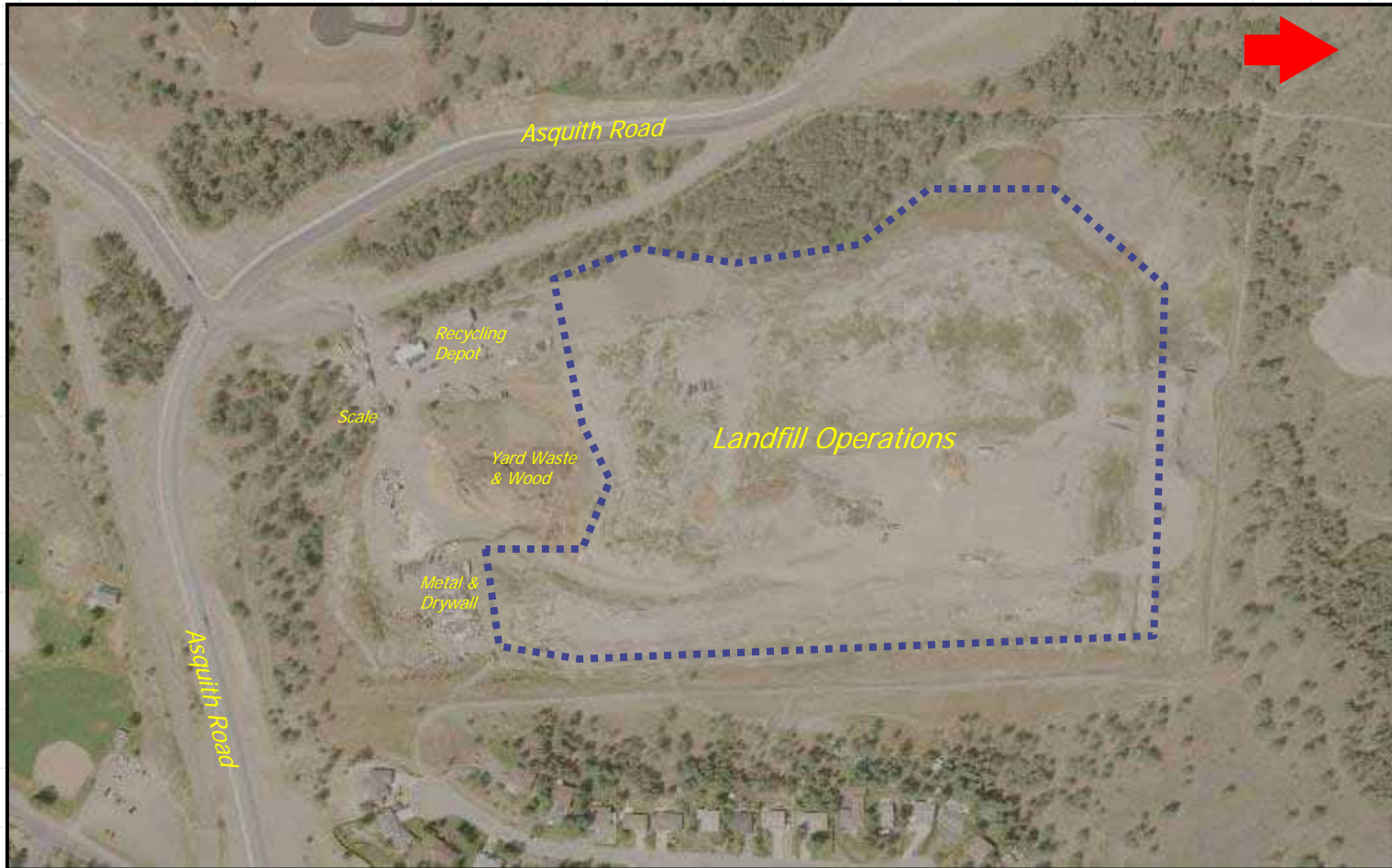
concrete and asphalt

- Site users come from Peachland, West Kelowna, Westbank First Nations, and RDCO West.
- As of June 1, landfill site only accepts materials from residents. All commercial loads diverted to Glenmore Landfill.
- Site currently scheduled for closure in late 2009.

Site Location



Site Layout



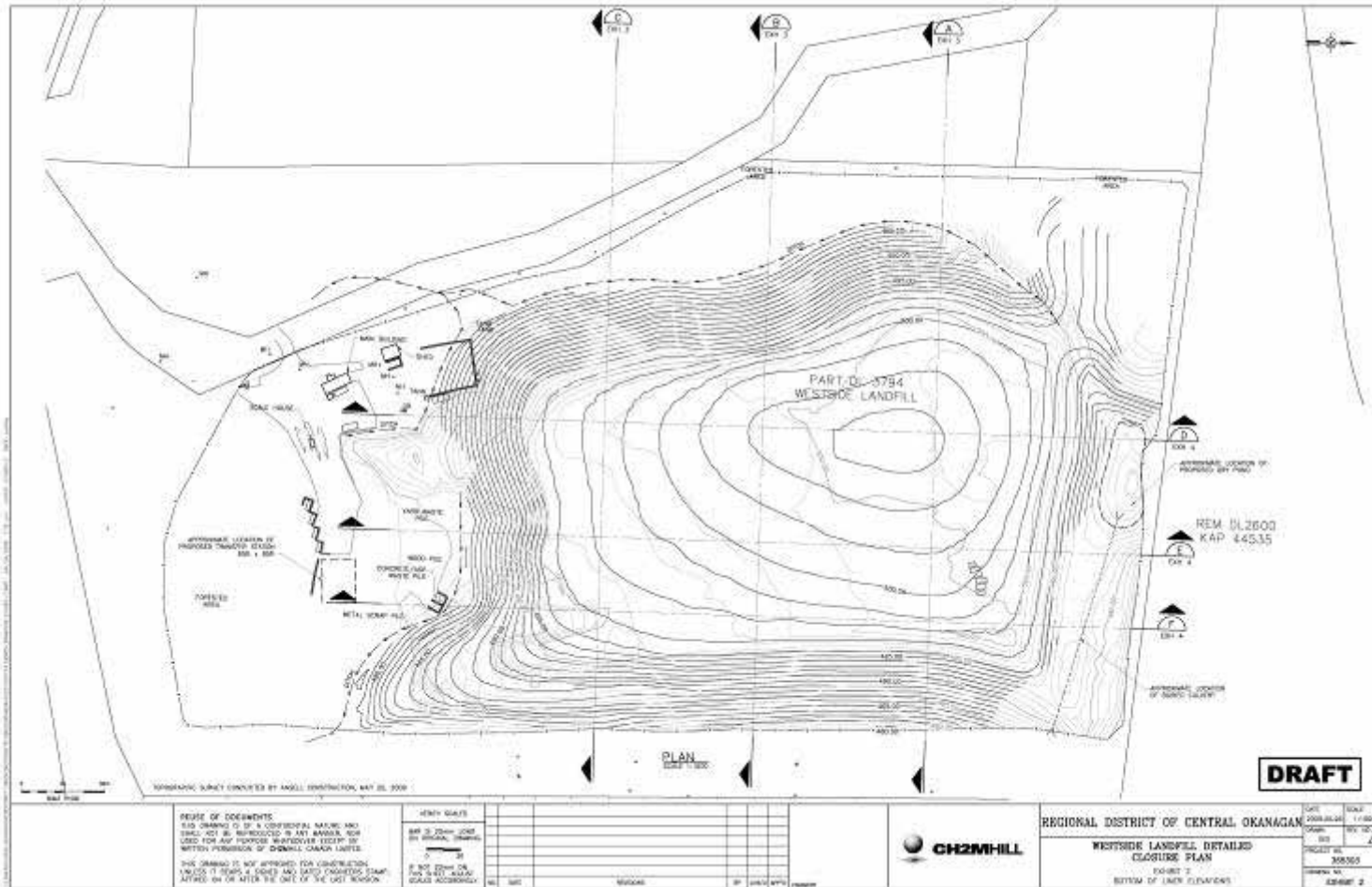


Landfill Closure Plan

Landfill Closure Plan

- Original Closure Plan was developed in 1993.
- Revised Closure Plan was prepared in 2008/2009 by a working group that included RDCO and consulting staff.
- Draft Closure Plan provided to West Kelowna for review and input.
- Phase 2 of public outreach planned for 2009.
- Detailed design of landfill cap, surface water controls and other required infrastructure scheduled to be completed following Phase 2 outreach program.
- Closure work to be completed during 2010/2011.

Proposed Final Contours



End Use Plan

- 1993 Closure Plan recommended passive recreational use of the site (e.g. picnic area, playground) following closure.
- Revised Closure Plan suggested use as a low-maintenance community/regional park with vegetation consistent with surrounding Okanagan Valley. Potential for walking trails and non-obtrusive interpretive displays.
- RDCO has a Closure Reserve Fund in place to cover the costs of final grading and capping, post-closure monitoring programs, and contingencies.
- Closure Reserve Fund was not intended to cover costs of redeveloping site for post-closure reuse.
- Closure Fund (currently between \$1.5 and \$2 million) does not appear to be sufficient to cover incremental costs of site redevelopment for recreational or park use.



South-end Redevelopment

Drivers

- Site has become “hub” for solid waste management activities on the west side of Lake Okanagan.
- Residents in Peachland, West Kelowna, WFN and RDCO West are educated about site location and take advantage of the waste disposal and recycling services provided.
- Some private sector initiatives have evolved to replace some, but not all, of the services currently provided by the Westside Landfill.
- Having a site on west side of Lake Okanagan integral to the Regional Solid Waste Management Plan.
- Phase 1 Consultation and resident surveys (questionnaire and telephone surveys) in 2008 indicated that residents want continued service.

Telephone Survey Results

- 88% use the Westside Landfill to drop off garbage at least 1-2 times per year
- 30% use the Westside Landfill to drop off garbage 11+ times per year
- 74% used the Westside Landfill to drop off yard waste in 2007
- 69% used the Westside Landfill to drop off recyclables in 2007

- 76% think it is important or very important (51%) to have a garbage drop-off on the Westside once the landfill is closed
- 74% think it is important or very important (46%) to have a yard waste drop-off on the Westside once the landfill is closed
- 73% think it is important or very important (44%) to have a recyclables drop-off on the Westside once the landfill is closed

Status of Site Redevelopment

- RDCO and West Kelowna staff have agreed in principle that continued residential waste acceptance is required, and that reuse of Westside Landfill is preferable to finding a new site.
- Two transfer station options are being assessed: “status quo” system and an “enhanced” system.
- Basis of design for an enhanced transfer station has been drafted, and various site layouts prepared for consideration.
- A final decision on what additional services should be incorporated into the redeveloped site (e.g. yard waste, recycling, metals) has not been made.
- Business case is currently being completed by staff to determine how and who can best deliver the service.

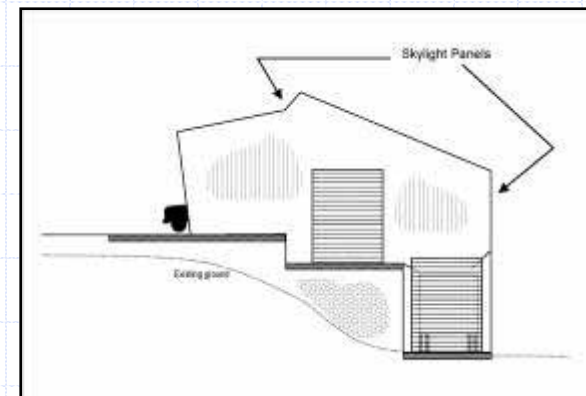
Transfer Station Option 1

- “status quo” option which involves re-tasking the existing transfer bin system for hauling waste to Glenmore Landfill.
- Minor expansion of bin system may be necessary depending on scope of services provided.



Transfer Station Option 2

- “enhanced” option which involves replacing existing transfer bin system with an enclosed transfer station based around use of 50’ transfer trailers.





Moving Forward

Next Steps

- Decide on what additional services should be incorporated into the redeveloped site (e.g. yard waste, recycling, metals)
- Completion of "Business Case" on transfer station service delivery.
- Determine capital and operating cost funding mechanisms.
- Obtain formal statement of support from Peachland, WFN, and Kelowna.
- Complete Phase 2 community outreach program.
- Identify final end use plan and any additional funding requirements/sources.
- Finalize detailed closure plan and associated engineering designs.
- Finalize designs for any necessary transfer system and recycling program upgrades.